

Thomas D. Greene Farm

Southeast Side Tom Greene Road (SR1130)

Thomas D. Greene (1864-1936) and his wife Cora Ann (Foster) Greene constructed the three-bay main block of this weatherboarded farmhouse in 1902; Harve Stewart was the builder. In addition to his farming duties Greene, a native of Davidson County, operated a federally licensed corn whiskey distillery, according to family tradition. A two-room north ell, with a projecting front bay, was added in 1910. Plain balusters run between the turned posts of a hip-roofed porch, which wraps across the front and down the south side of the front ell. Six-over-six sash are the



primary window treatment. Exterior openings are framed by plain surrounds. The main entrance is flanked by four-pane sidelights set above inset panels. Original brick chimneys, laid in common bond, are centrally placed in the house's gable ends. The interior has been altered by the present owner, Roosevelt Belk Greene, the son of the original builders.

Several outbuildings stand to the immediate south of the former Belk Schoolhouse, now an outbuilding on the farm; the center-passage barn was constructed in 1912. To the rear of the house is a gable-roofed smokehouse, which is German-sided.

Former Belk School

Northwest Side Tom Greene Road (SR1130)

The former Belk School was constructed ca. 1880 as part of Union County's effort to make education available to children in rural areas. The school remained in operation until 1904. This school replaced the first Belk School constructed in 1848. The school building was acquired by the Greene family shortly after it ceased to operate and was converted to use as a farm building.

According to local tradition, Burdett Rollins, who was involved in the construction of the frame school, was also later employed as a teacher. The school is a simple front gable-roofed building sheathed in weatherboard. The



standing seam metal roof features a boxed cornice and narrow friezeboard. The facade has a central entrance. The side elevation has two evenly spaced windows covered with vertical board shutters. Similar windows are on the rear elevation. An entrance has been cut into the space between the windows. A vehicle shed was added to the north elevation about 1906.

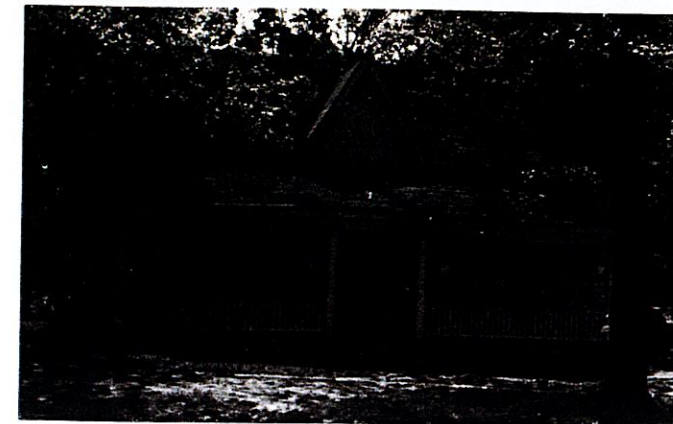
In addition to Rollins, whose salary was \$15.00 to \$20.00 per month, instructors included Dr. W.H. Sapp, Henry Rowell, Ed McCain, W.T. Laney, H.M. Richardson, and Fannie McIlwain. A number of prominent Union County residents including Claude Sapp, United States Senator from South Carolina, and Rape Stewart, South Carolina State Senator, are believed to have attended the Belk School.

The Belk School is a rare surviving example of Union County's system of rural educational facilities. In addition, the building is a classic example of vernacular non-urban schools.

S. P. McBride House

Northeast Side Tom Greene Road (SR1130)

Diamond cut wood shingles highlight the front gable of



this weatherboarded farmhouse which, according to local tradition, was constructed about 1911 by Step Plas McBride, a cotton farmer. A hip-roofed porch shelters the three-bay front elevation; plain balusters run between the square wood posts. The central entrance is bordered by three-pane sidelights set above inset wood panels. Exterior openings are framed by plain surrounds. Several frame outbuildings, including a center-passage gable-roofed barn, stand to the rear of the house. The property remains in the family.

Roosevelt Belk Greene
Son of Thomas D and Cora Foster
Greene
This day December 25 - 1990